



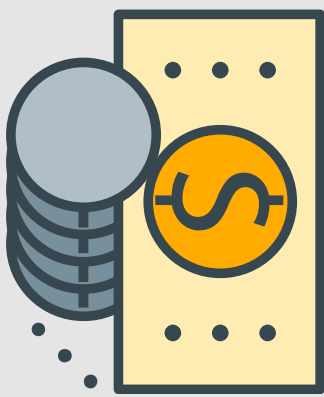
COVID-19 RECOVERY PROGRAM

The CRP process consists of any of the following elements. Conducted during one or more meetings based on the convenience of your company's team.



1 BUSINESS ASSESSMENT

NWIRC or another regional economic development partner conducts a business assessment (virtual or in-person) with your company to identify some of your most pressing challenges.



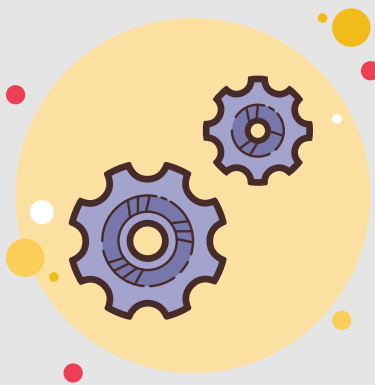
2 CASH FLOW CHECK

An optional cash flow analysis is conducted for the business based on specific needs.



3 TACTICAL ACTION PLAN

Action steps and project recommendations, along with referrals to regional support partners or service providers.



4 IMPLEMENTATION

If your company moves forward with recommendations, referrals are made to the partner who can best assist and also scout available funding. Examples of these projects may include:

- CUSTOMER diversification
- MARKET research
- STRATEGIC planning
- PROCESS improvements
- ISO Certification
- AUTOMATION and data systems

Get Started:
www.nwirc.org/crp